



Multiple Sclerosis Center

Parkinson's Center

Epilepsy Center

Alzheimer's Center

atlanta neuroscience institute

Dr. Jeffrey English

Physician

Ph: 404.351.0205

Direct Fax: 404.351.4556



Thank you for making ANI a partner in your healthcare.

Dr. English is a board-certified neurologist at ANI who provides comprehensive care for individuals with Multiple Sclerosis, Alzheimers disease, and a wide range of other general neurological conditions.

Please call 911 for medical emergencies

Your Clinical Nurse is available for non emergent needs or questions regarding symptom management or general neurological care.

Clinical Nurse for Dr. English: Ext 130

Medication Refills: Please give the office 3 days advance notice of when medications will need a refill at your *local* pharmacy. Please give at least 5 days advance notice for *specialty or mail order* prescriptions

Medication refills for Dr. English: Ext 330

Medical Assistant: Call when you have questions regarding appointment times, referrals for PT/OT/SLP

MA for Dr. English: Ext 312

Case Management: Our onsite case management handles: Disability, FMLA, DME prescriptions

Your assigned case manager: Ext 142

Clinical Pharmacist: Please call when you have questions regarding insurance Prior Authorizations or funding assistance for medications.

Clinical Pharmacist Ext: 141

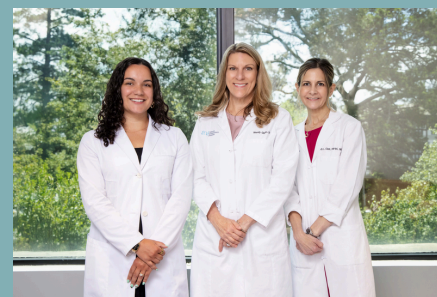
Billing: Please contact **Ext 103** for financial insurance questions about your account

Off-site MRIs and Hospital procedures: Ext 105

3200 Downwood Circle, NW Ste 550 Atlanta, GA 30327

Welcome to Your Care Team at ANI!

Personalized neurological care with clear support every step of the way.



Kendyl Coleman MSN, APRN, FNP-C

Wendy Giglio MSN, FNP-BC

Kathleen Clark MS, RN, FNP-BC, MSCN

Meet your skilled clinicians who work closely with Dr. English to provide you with comprehensive, compassionate care every step of the way.

Patient Portal: Follow My Health is a free patient portal offered to patients. Through the portal you will be able to communicate with your physician and the rest of your clinical team in an efficient manner. You can also schedule appointments and make payments on your account.

Log on msca.followmyhealth.com to Create an Account. Once your account is created select 'Add Organization' and add ANI.

Telehealth Appointments:

To ensure appropriate medical care, patient visits cannot be conducted over the phone. If you have a virtual appointment you will receive a Doxy link sent to you for log in prior to your scheduled appointment time.

Kindly allow yourself 15 minutes before your appointment to prepare for the telehealth session.

Please contact **Ext 302** to schedule or change an appointment or to verify insurance

Medical Records (includes MRI discs):

To have copies of your MRI disc sent to yourself or another provider **Ext: 143**

Requests may be submitted electronically to

HealthMark's Request Manager at:

<https://requestmanager.healthmark-group.com> or

800-659-4035

3200 Downwood Circle, NW Ste 550 Atlanta, GA 30327